

Welcome to Punggol View

It is nice to have you with us today

P4 e-Briefing for Parents- 9 Mar 2022

Programme Outline

Time	Programme
6.00pm -6.15pm	<ul style="list-style-type: none">• Registration/Admin Matter• Welcome
6.15pm -7.15pm	Principal' s Address on: <ul style="list-style-type: none">• What's in store at P4• SBB Matter• Revised PSLE scoring system
7.15pm – 7.30 pm	<ul style="list-style-type: none">•Q & A

Purpose of this session:

- ❑ update on Subject-Based Banding (SBB) as well changes to 2021 PSLE.
- ❑ Provide parents with more info on how SBB works and what it means for your child .





Parents as co-partners of education

Our Vision

**Confident Learners, Active
Citizens**

Our Mission

**Touching Lives, Inspiring
Future**

Values-based, Holistic Development

Punggol View defines 6 MESCAP Student Outcomes

Morally Upright

Knows the R³ICH values, feels the need to act and demonstrates the observable behaviours for each value

Emotionally Adept

Manages one's emotions, relates well with others and makes responsible decisions

Physically Active

Exercises regularly and eats wisely



Socially Responsible

Contributes to the betterment of others and the environment by participating in Values in Action, and works towards becoming a good citizen

Aesthetically Aware

Is a motivated participant and an appreciative audience of the Arts

Cognitively Robust

Achieves academic success and is curious, confident and collaborative

What's in store for your child at P4?

Transition from P3 to P4

- P4 - Last year in the Foundation Stage of Primary Education
- First year of becoming in the “Upper Primary”
- Subject-Based Banding (SBB) to move on to the Orientation Stage (P5)
- Lower Primary years had lots of **teacher-directed** lessons with lots of fun, freedom to explore, and with only your P3 year-end exams as your first exams
- Academic rigour is building up in P4 (e.g. you will have two major exams this year) whereby you'd need to take greater **ownership in your learning**



Foundation Stage
(Primary 1-4)

Orientation Stage
(Primary 5-6)

Primary School Leaving
Examination (PSLE)

5 Learning Dispositions



JOY OF LEARNING

Students who show joy of learning are motivated to learn and do their best. They derive satisfaction from learning new skills or discovering new ideas. They are also enthusiastic and show great interest in learning new things.



RESILIENCE

Students who are resilient do not give up easily when the problem is difficult and are not easily discouraged. They will even rise to the occasion when faced with setbacks.



OPEN-MINDEDNESS

Students who are open-minded are willing to try out ideas or solutions offered by peers, willing to explore possibilities and consider other viewpoints and approach challenges in creative ways.



CURIOSITY

Students with a natural curiosity will show interest in the world they live in. Students who are curious are eager to ask questions to develop deeper understanding and explore and learn about the things around them.



COLLABORATION

Collaborative learners are students who can cooperate well with others in a group learning setting, respect ideas shared by peers and value contribution of others. They work well as a team and learn from one another.

What criteria will **PGVP** use to identify students with positive learning dispositions?

Joy of Learning ■ **R**esilience ■ **O**pen-mindedness ■ **C**uriosity ■ **C**ollaboration (JROCC)

Learning Dispositions	Primary 1	Primary 2	Primary 3
Joy of Learning Students who show joy of learning are motivated to learn and do their best. They derive satisfaction from learning new skills or discovering new ideas. They are also enthusiastic and show great interest in learning new things	<ul style="list-style-type: none"> • Listens actively in class • Submits work timely and is always neat and presentable • Displays willingness to learn new things 	<ul style="list-style-type: none"> • Listens and participates actively in class • Submits work timely and is always neat and presentable • Shows initiative to look for new information • Shows positive attitude towards solving problems 	<ul style="list-style-type: none"> • Listens and participates actively in class • Submits work timely and is always neat and presentable • Shows initiative to look for new information • Shows positive attitude towards solving problems • Shows initiative to learn beyond the classroom
	Primary 4 <ul style="list-style-type: none"> • Listens and participates actively in class • Manages work well • Shows initiative to look for new information beyond classroom content • Shows positive attitude towards solving problems using multiple sources • Shows initiative to extend learning beyond the classroom to deepen knowledge • Contributes ideas in class 	Primary 5	Primary 6

4 levels Qualitative Descriptors

Level 1	Starting Out	<u>Beginning</u> to demonstrate positive learning dispositions
Level 2	Getting There	Demonstrates positive learning dispositions <u>some</u> of the time
Level 3	Got it	Demonstrates positive learning dispositions <u>most</u> of the time
Level 4	Achieved Mastery	Demonstrates <u>all</u> the time

❖ Personal Qualities of your child
❖ Reflected in the Holistic Development Profile

How can Parents help nurture their child's learning Dispositions?



CURIOSITY

Students with a natural curiosity will show interest in the world they live in. Students who are curious are eager to ask questions to develop deeper understanding and explore and learn about the things around them.

See Think Wonder

- What do you see?
- What do you think about that?
- What does it make you wonder?

See what captivates your child's interest and suggest,
Let's learn about this together!

Find ways to connect with your child's "inner scientist": plant seeds with your child to discover **where** flowers come from; fill glasses with different amount of water, and wonder with your child **why** they sound different when you tap the glass.



RESILIENCE

Students who are resilient do not give up easily when the problem is difficult and are not easily discouraged. They will even rise to the occasion when faced with setbacks.

**Resist the Urge to
Fix It and Ask
Questions Instead**

Try using language such as
I can see that you're having some difficulty with ... would you like to try doing it again?

Think Back - Learn from it - Do it better

- What happened?
- What was the first thing you did?
- What have you learnt from...?
- What could you have done?
- Do you like to...? Why?
- If you are asked to... again, what else would you do?
- What would you do if this happens again?

Blended Learning(BL)

- For 2022- continue with our BL efforts. For P2-5 levels
- What do we hope to achieve through BL?
- Blended Learning builds on our continual

educational focus “Learning for Life”

to

• eq

ha

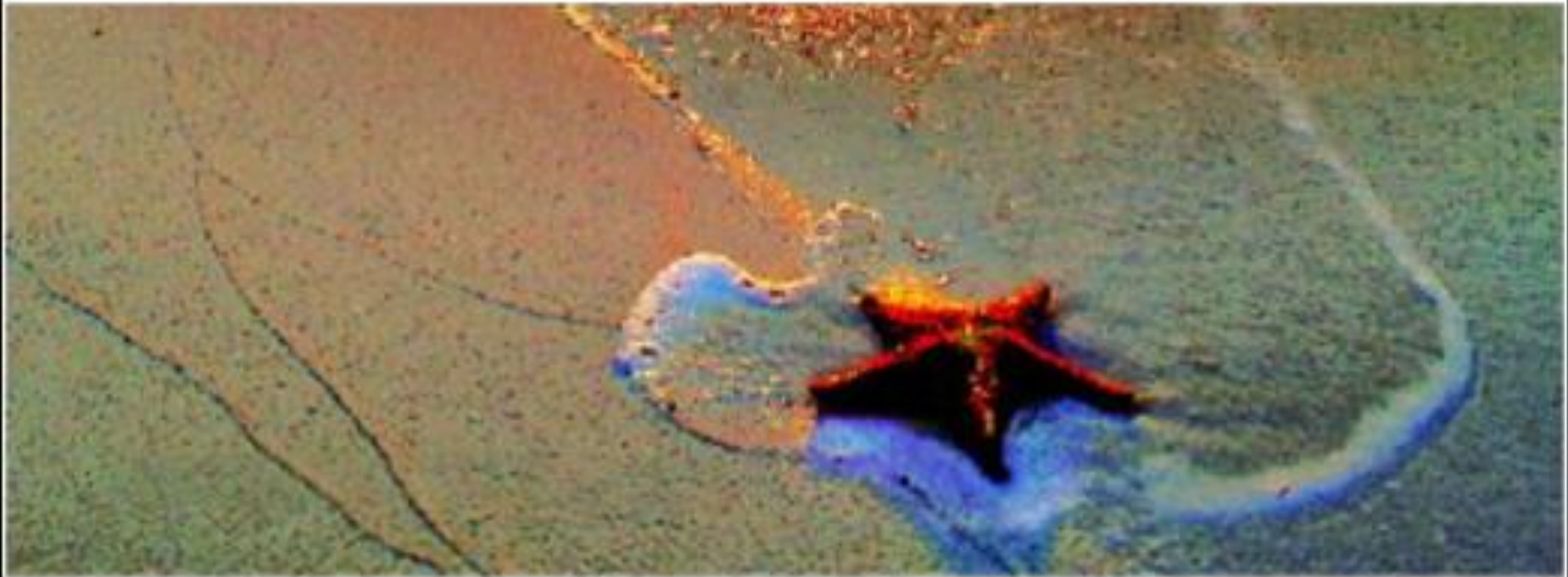
• to

Key
follow

- Through Blended Learning, we hope to:
 - Nurture self-directed and independent learners who are able to -
 - **Take ownership over learning**
 - **Plan, monitor and regulate learning**
 - **Search, access, acquire information**
 - **Extract and evaluate information, and continually refine understanding**
 - Develop passionate and intrinsically motivated learners – learners who possess the desire and passion to learn for life
 - **Curious and eager to new knowledge**
 - **Open and willing to embrace challenges**
 - **Pursue and sustain areas of passion**

Subject-based Banding

NURTURING EVERY CHILD



For P4 students...

Why introduce P4 SBB?

- ❖ To provide more flexibility to students with strengths and abilities that vary across subjects
- ❖ To encourage greater interaction among students with different strengths

What does P4 SBB mean for your child?

- ❖ There will be greater flexibility in subject combinations
- ❖ Your child has the choice to take a combination of standard and foundation subjects, depending on his strengths
- ❖ SBB will be conducted in place of streaming at the end of P4
- ❖ Your child will be grouped according to the P4 exam results for all 4 subjects(EL, MT, MA, Sci)

Recommendation Criteria (1)

School recommends a subject combination based on P4 examination results.
Parents select preferred combination.

At P4

If your child
(at the end of P4)

Your child will be
recommended to take

Passes all 4 subjects and performs very well in Mother Tongue Language (85%)

EL, Maths and Science (85% and above)

- Offer 4 Standard subjects + Higher Mother Tongue Language

2022: Higher Chinese Language

4S1H

Recommendation Criteria (2)

School recommends a subject combination based on P4 examination results.
Parents select preferred combination.

At P4

If your child
(at the end of P4)

Your child will be
recommended to take

Passes all 4 subjects

Or

Passes 3 subjects

- Offer 4 Standard subjects

[4S]

Or

- Offer 3 Standard subjects and 1 Foundation subject (Mother Tongue Language)

[3S1F]

Recommendation Criteria(3)

School recommends a subject combination based on P4 examination results.
Parents select preferred combination.

At P4

If your child
(at the end of P4)

Your child will be
recommended to take

Passes 2 subjects or less

EL (45% and above)
MA (45% and above)

- Offer 3 Foundation subjects +
1 Standard subject (Mother Tongue
Language) **3F1S**
- Or
- Offer 4 foundation subjects **4F**

Note : Students who passed 2 subjects at the P4 End-of-Year Examination, can be offered to take 4 Standards subjects based on teachers' recommendation and the child's attitude towards learning

How does SBB Work?

[At P4]

School recommends subject combination,
based on P4 End of Year/SA2 Exam results.
Parents indicate preferred combination.



[At P5]

Student takes subject combination determined by the
school with inputs from the parents.

How does SBB Work?

[End of P5]

Student who takes 1 or more foundation subject(s) and does very well in them	Student who takes standard subjects and has difficulty coping	All other students
School may allow him to upgrade 1 or 2 subjects to standard level if school believes he can cope; or continue the same subject combination in P6	School may allow him to take 1 or more subjects at foundation level in P6	School will allow them to continue the same subject combination in P6

SBB (2020)

Based on SA2 results, the following is subject combination:

- ❖ 4S1HMTL
- ❖ 4S- **majority**....
- ❖ 3S1F (MTL)
- ❖ 1S (MTL) 3F
- ❖ 4F

SBB and your child's SA2 outcome will guide class allocation for your child.

Classroom Allocation for 2023...

Transition Levels	Criteria
P1 to P2	En-bloc promotion with minimal movement.
P2 to P3	<p>Class allocation is based on Learning Outcomes attainment for English and Math and the assessment of Learning Dispositions.</p> <p>Based on the above, students are then divided into 3 broad groups of similar learner profiles</p> <p>Students are then allocated to their classes <u>within the broad group</u> factoring in gender and ethnic grouping mix.</p>
P3 to P4	En-bloc promotion with minimal movement.
P4 to P5	<p>Class allocation is based on English, Mathematics and Science SA2 results as well as choices made through the Subject-Based Banding (SBB) Exercise. Students are divided into 3 broad groups:</p> <p>Based on the above, students are then divided into 3 broad groups of similar learner profiles</p> <p>Students are then allocated to their classes <u>within the broad group</u> factoring in gender and ethnic grouping mix.</p>
P5 to P6	En-bloc promotion with minimal movement.

How does SBB Work for P6?

[At P6]

Student takes subject combination decided by school



[End of P6]

Student sits for Primary School Leaving Examination
(PSLE)

Important Information

After the SA2 exams

- The students will check their scripts and teachers will go through their mistakes with them
- The scripts will be returned to the students and parents after checking. Essentially, at the end of the whole subject-banding exercise, students should have their scripts.

Work Flow after SA2

T4W8

Checking of
SA2 Papers



T4W8

Return of
Papers



T4 W9

Issue
Option
Forms



T4W9

Return Option
Forms
(2 days to
make the
choice)



T4W10

Class
Allocation to
P5

SBB and Secondary School admission

• Progression to secondary level depends on PSLE Score.

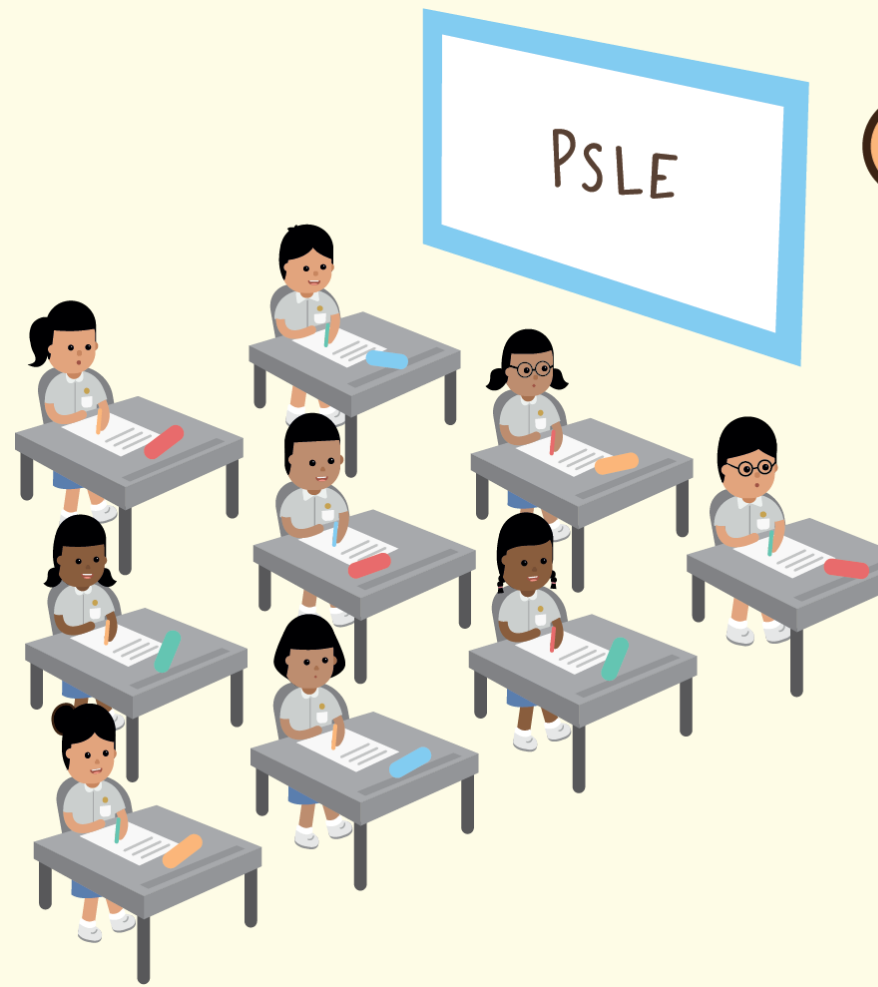
- The scoring system for 2021 batch onwards will be different .
- Based on revised PSLE scoring system. No longer using PSLE Aggregate score. Using Achievement Level (AL) instead.
- Different expectations of standard and foundation subjects will be taken into account when the PSLE score is calculated

• Offering weaker subjects at foundation level is not a disadvantage.

- Your child will be able to focus on building up strong fundamentals in the weaker subjects (E.g. weak in MTL)

THE PSLE REMAINS A USEFUL CHECKPOINT.....

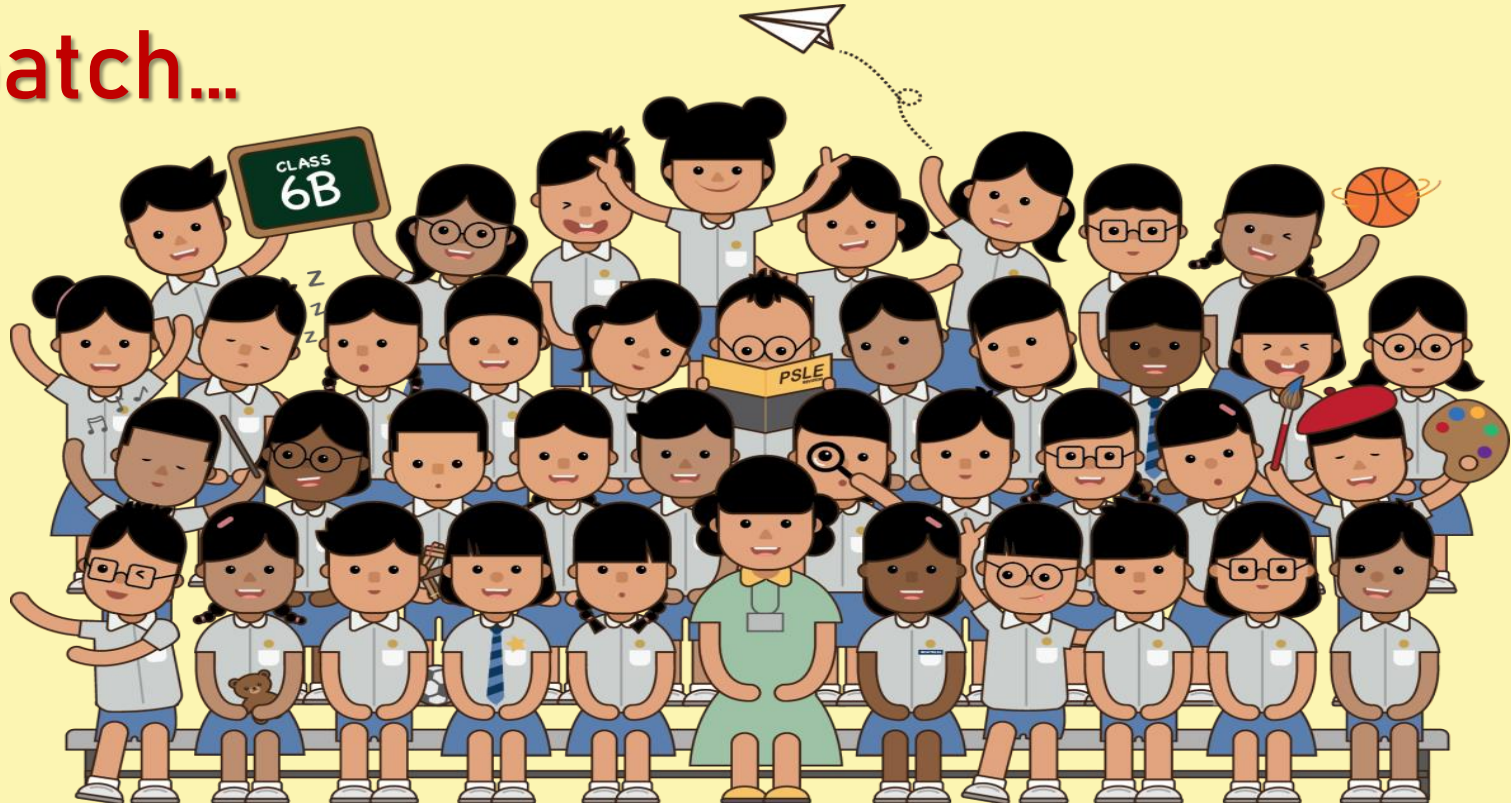
It gauges the level of students' learning (in the key subjects) at the end of six years of primary school and guides his future choices.



THE NEW PSLE SCORING & S1 POSTING SYSTEM

First Batch of PSLE students - 2021

Your child will be the third
batch...



What is different? Currently....

THE T-SCORE AGGREGATE DETERMINES S1 POSTING

- It shows how well a student has done compared to his cohort.
- The T-score Aggregate largely determines which secondary school a student is posted to.
- A student with 'better' letter grades may have a lower T-score Aggregate than a student with 'poorer' letter grades.

SUBJECT	GRADE
ENGLISH LANGUAGE	A
MOTHER TONGUE	A
MATHEMATICS	A*
SCIENCE	A*
T-SCORE AGGREGATE	244
SECONDARY SCHOOL COURSE ELIGIBLE FOR	EXPRESS

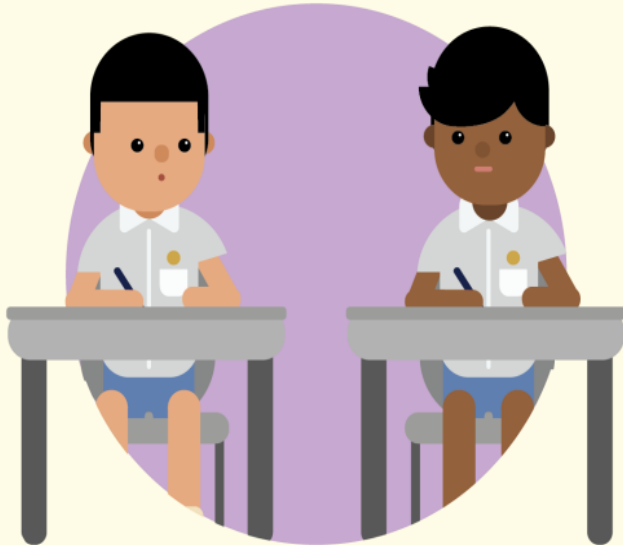
STUDENTS WITH SIMILAR SCORES IN EACH SUBJECT WILL BE GROUPED INTO ACHIEVEMENT LEVELS

- There will be 8 Achievement Levels (ALs) with AL1 being the best.
- A student's AL for each subject will reflect his level of achievement, rather than how he has performed relative to his peers.

PER SUBJECT
AL 1 (BEST)
AL 2
AL 3
AL 4
AL 5
AL 6
AL 7
AL 8

***PASS GRADE IS
AL7 OR BETTER**

THE CHANGES TO THE PSLE SCORING ARE MEANT TO REDUCE AN OVER-EMPHASIS ON ACADEMIC RESULTS



By reducing fine differentiation at a young age



By recognizing a student's level of achievement, regardless of how his peers have done

CHANGES COMPARED TO CURRENT PSLE

BROADER ACHIEVEMENT LEVELS INSTEAD OF T-SCORES

- Reduces fine differentiation of students at a young age based on exam scores.
- Standards-referenced – Recognise a student's level of achievement in each subject, regardless of how his peers have done.

AL	RAW MARK RANGE	FOUNDATION LEVEL AL	FOUNDATION RAW MARK RANGE
1	≥ 90		
2	85 – 89		
3	80 – 84	A	75 – 100
4	75 – 79	B	30 – 74
5	65 – 74	C	< 30
6	45 – 64		
7	20 – 44		
8	< 20		

The **PSLE Score** will remain the **first criterion** for posting

**CHOICE
ORDER OF
SCHOOLS
TO MATTER
MORE
(6 CHOICES
OF
SCHOOLS..)**

- Updates to Eligibility Criteria & Reporting of Grades

FORMAT FOR REPORTING OF PSLE SUBJECT PERFORMANCE FOR 2021 PSLE

For Candidates:

Result Slip

SUBJECT	ACHIEVEMENT LEVEL
ENGLISH LANGUAGE	3
MATHEMATICS	4
SCIENCE	2
CHINESE LANGUAGE	1
HIGHER CHINESE LANGUAGE	MERIT
PSLE SCORE	10
SECONDARY SCHOOL COURSE ELIGIBLE FOR:	EXP

SUBJECT	ACHIEVEMENT LEVEL
ENGLISH LANGUAGE	6
MATHEMATICS	7
FOUNDATION SCIENCE	C
CHINESE LANGUAGE	8

P5 students will be getting results slips of similar format for SA2 exam

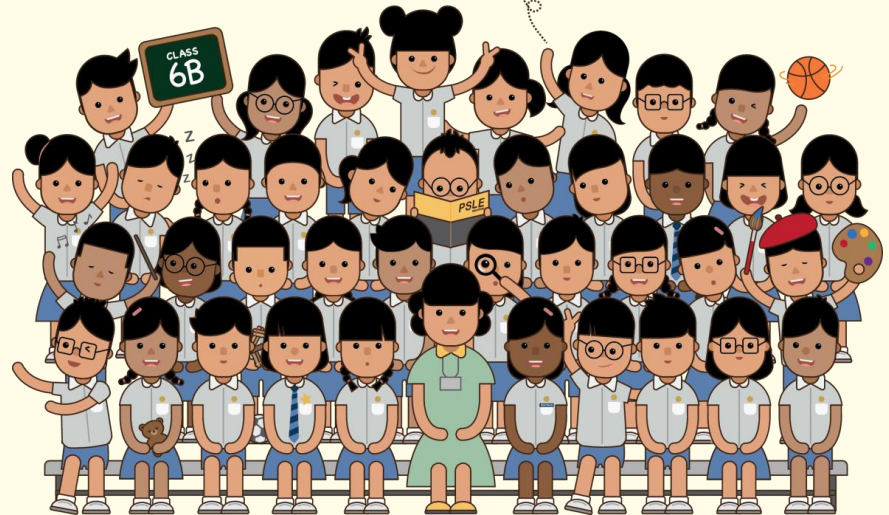
Notes:

- PSLE Score and Secondary School Course E
- The equivalence table for foundational ALS
- AL 8 and AL C will be reported in Result Slip who sat for the examinations. In the current

nts
ate.

UPDATES ON IMPLEMENTATION OF THE PSLE SCORING & S1 POSTING

UPDATES ON MOTHER TONGUE LANGUAGE (MTL)-EXEMPTION



CONFIDENTIAL

Guiding parents in making subject choices

6. SCORING FOR MTL-EXEMPT AND ASIAN LANGUAGE/ FOREIGN LANGUAGE STUDENTS

- Bilingualism is a cornerstone of our education policy. We require all students to take two languages: English Language and an official MTL.
- Students with extenuating circumstances may be considered for MTL-exemption or take an Asian Language/Foreign Language (AsL/FL) in lieu of our official MTL. Applications are considered on a case-by-case basis.

For example:

- Special Educational Needs (SEN) students with difficulties coping with overall learning
- Returning Singaporeans who have not kept up with MTL/ MTL-in-lieu learning while overseas

Guiding parents in making subject choices

6. SCORING FOR MTL-EXEMPT AND ASIAN LANGUAGE/ FOREIGN LANGUAGE STUDENTS

- For students who are exempted from MTL or take an AsL/FL in lieu of an official MTL, their PSLE result slip will only reflect the three subjects they have taken.
- However, for the purposes of Secondary 1 posting, these students will need an assigned MTL score so that they have a PSLE score comprising four subjects.
 - To determine the assigned MTL score, reference is made to MTL scores of other students who have achieved similar scores in English, Mathematics, and Science.
 - This is the same approach taken in today's T-score system.

CONFIDENTIAL

Guiding parents in making subject choices

6. SCORING FOR MTL-EXEMPT AND ASIAN LANGUAGE/ FOREIGN LANGUAGE STUDENTS

- In reviewing the score assignment for these students under the new PSLE scoring system, we needed to strike a balance between:
 - Acknowledging that students have valid reasons for seeking MTL exemption or taking an AsL/FL, and
 - Ensuring some parity between scoring for exemption, Foundation and Standard MTL.
- From 2021, MTL-exempt students will be given an assigned MTL score between AL 6 to 8, as the scores for Foundation level subjects are pegged to AL 6 to 8

MTL Exemption...

For Example ...

STUDENT A	
<u>Subject</u>	<u>AL</u>
English	2
Mathematics	4
Science	5
Mother Tongue	7
PSLE Score: 18	

MTL-EXEMPT STUDENT	
<u>Subject</u>	<u>AL</u>
English	2
Mathematics	4
Science	5
Imputed MTL Score	7
PSLE Score: 18	

Referencing
similar EMS
scores from
peers

**As parents.....
what can you
do to support your child?**

Parents as co-partners in education

Part of the preparation for P4 and hence PSLE depends on building the right habits in P4.....

● Attendance

- Come to school every day
- Be on time 7.30 am ; **must be in the classroom by 7.25 am**

● Attitude

- Pay attention during lessons
- Encourage your child to ask when in doubt / not sure
- Ensure that your child complete his/her homework on time
- Ensure that your child does his/her corrections

● Achievement

- Try your very BEST

3As to Success....

Message for P4 parents...

How can you Help?

- ❖ **Creating the Ideal Environment**
- ❖ **Support and Encourage**
- ❖ **Monitor your child's homework**
- ❖ **Talk to your child**
- ❖ **Set targets/ goals together with your child**

Conclusion

