

# AI & YOUR CHILD

*Should parents  
guide or guard against AI?*

**A Quick Guide for Parents**



Swipe to learn more



# WHAT IS AI?

AI is a type of technology that allows computers to perform tasks that usually require human thinking.



## **Generative Artificial Intelligence:**

**1) Gen AI is a type of AI that is probabilistic and predicts the most likely answer. This means it can sound confident even when it is inaccurate.**

**2) Gen AI responds like a person, but it does not truly understand or experience emotions.**

## **What Opportunities and Challenges Does AI Present?**

### **Opportunities**

- Supports learning through personalised and instant feedback
- Assists with ideation
- Provides an avenue to improve digital literacy, critical thinking, and problem-solving skills

### **Challenges**

- May give inaccurate or biased answers
- May create tendency for over-reliance when overused
- May pose risks if personal information is shared

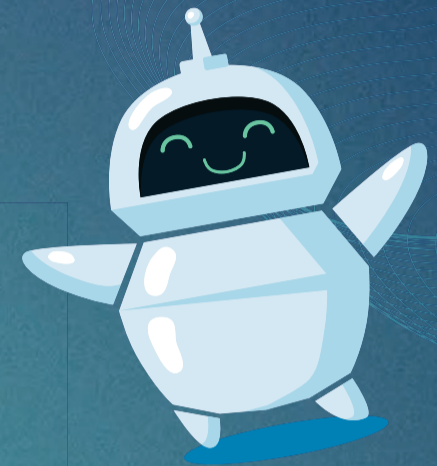
# WHAT IS AGE-APPROPRIATE USE OF AI?

Schools are given guidance on the age-appropriate use of AI. These guidelines are informed by learning sciences.

## **P1 to P3**

**Concrete, hands-on learning experiences, and social interactions should be prioritised** to allow students to build foundational knowledge, cognitive and social skills, and human relationships.

- *Direct use of AI tools by students is not advisable as students may not be able to discern the output and may mistake AI as human*



## **P4 to P6**

The use of AI could be **gradually introduced to students** under the guidance of teachers.

- *When using chatbots, students should be supervised and guided to discern the output as they develop in their ability to be safe and responsible users of AI*

## **Sec**

There should be a gradual release of responsibility to **allow for independent use of AI**, so that students learn to use AI to support learning while **not over-relying on it**.

- *Students will be given opportunities to reflect on their use of AI so that they develop into confident and ethical AI users*

## **Pre-U**

As **students become more empowered to use AI as a collaborator**, emphasis on the use of AI in a **safe, responsible, and ethical** manner continues.

- *Students will be given opportunities to innovate with AI and reflect on their use to guard against misuse of AI*

# WHAT CAN PARENTS DO?

*Parents play an essential role in supporting your child's use of AI tools.*

## **3 Tips to Support Your Child's AI Use**

### **1) Explore and discover safe AI tools together**

When trying AI tools with your child, role model and discuss how to use the tools safely.

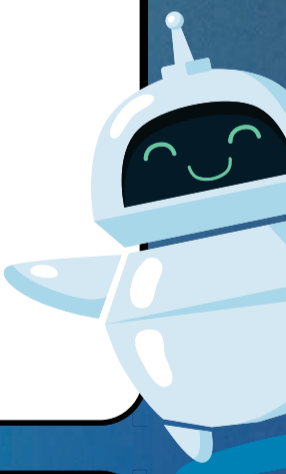
- **At the primary level**, you can partner with schools in supporting your child's social-emotional needs, such that AI is not used as a companion in place of a friend or trusted adult
- **At the secondary and Pre-U levels**, you can have conversations on how AI may not always be accurate and remind your child of the need to check AI's output



### **2) Set rules for AI use with your child**

Rules that you can set for your child's AI use are:

- Never share personal details (e.g. full name, address, or school) with AI tools
- Use AI to brainstorm or get started, but the final work should still reflect your thinking
- **[At the primary level]** Ask for permission to try new AI tools or websites



### **3) Guide your child's use of AI**

Learning requires effort. It is vital that your child remains in-charge of their learning, and that AI does not become a crutch. You can have conversations with your child on how they are using AI for schoolwork.

- **At the primary level**, share with your child that it is important to reinforce and internalise their learning. School work is designed to help them do so. Use of AI is not advisable unless there are specific tasks assigned by the teachers
- **At the secondary and pre-U levels**, encourage your child to learn to critique AI's output and not just use AI to seek answers when doing homework and assignments

# PARENTS + SCHOOLS = PARTNERS IN GUIDING RESPONSIBLE AI USE

*Everyone has a  
part to play*

*AI is already in our daily lives.  
It is essential that our students learn how to  
use AI safely and effectively.*

***In school,*** teachers intentionally adapt AI in age-appropriate ways to help students learn. The Singapore Student Learning Space (SLS) allows students to use AI tools in a safe manner while allowing them to personalise and take greater ownership of their learning.

***At home,*** parents play a vital role in guiding and reminding your child to use AI safely by not over-relying on AI and being discerning in checking the output they receive.

***Together,*** schools and parents must continue to work closely to help our students and children navigate the AI-transformed world.

## References

William, R. (2024) "AI can make you more creative - but it has limits". MIT Technology Review.  
<https://www.technologyreview.com/2024/07/12/1094892/ai-can-make-you-more-creative-but-it-has-limits/>  
Milberg, T. (2024). The future of learning: How AI is revolutionising education 4.0. World Economic Forum.  
<https://www.weforum.org/stories/2024/04/future-learning-ai-revolutionizing-education-4-0/>  
<https://www.commonsense.org/system/files/pdf/2025-05/activity-guide-for-parents-talking-to-your-kids-about-ai-5.pdf>  
<https://edition.cnn.com/2025/07/16/health/teens-ai-companion-wellness>  
<https://www.nytimes.com/2024/11/21/well/mind/teens-ai-influencer-videos.html>  
<https://www.timesunion.com/opinion/article/parents-talk-children-ai-go-college-18303760.php>  
<https://www.digitalforlife.gov.sg/>